

## SPECIFICATIONS

		KTS-472R10LC	KTS-472R20LC
<b>Distance Measurement</b>			
Max.Range	Single prism		5.0km
	Reflectorless	1000m	2000m
	Reflector Sheet		1.0km
※Object in shade, or sky overcast			
Accuracy	Reflectorless	±(3+2ppm×D) mm	
	Reflector	±(2+2ppm×D) mm	
	IR sheet	±(2+2ppm×D) mm	
Reading	Max:9999999.9999m Min:0.1mm		
Measuring Time	Reflectorless	Fine Mode:<0.3s; Tracking Mode:<0.1s	
Atmospheric Correction	Manual Input, Auto Correction		
Prism Constant	Manual Input, Auto Correction		
Temperature Sensor	Freecale Sensor		
<b>Angle Measurement</b>			
Measuring Method	Absolute Continuous		
Dia. of Encoder Disk	79mm		
Minimum Reading	0.1"		
Accuracy	2" / 5"		
Detection Method	Horizontal: Dual, Vertical: Dual		
<b>OS and Hardware platform</b>			
Operate System	Windows CE 6.0		
Display	3.5 inch. 640x480 Highlighted Touch Screen		
Data Communication	RS-232C, Mini USB, SD Card, USB (32GB)		
Processor	Intel PXA310 806MHZ		
Memory	128M DDR, 512M NAND Flash(>2,000,000 points)		
Bluetooth	30M range. Class 2, V2.0+EDR		
WiFi	Optional (wifi is not included in default configuration since April. 30th 2022)		
Power Control Processor	Auto Adjust Voltage and Frequency, Save energy		
<b>Telescope</b>			
Image	Erect		
Tube Length	154mm		
Effective Aperture	45mm,(EDM:50mm)		
Magnification	30x		
Field of View	1° 30'		
Minimum Focus Distance	1m		
Resolving Power	3"		
<b>Auto Compensator</b>			
System	Dual Axis Liquid-electric		
Working Range	±3'		
Accuracy	1"		
<b>Vial</b>			
Plate Vial	30" / 2mm		
Circular Vial	8/ 2mm		
<b>Laser Plummet (default)</b>			
Accuracy	±1.0mm/1.5m		
<b>Optical Plummet (optional)</b>			
Image	Erect		
Magnification	3x		
Focusing Range	1m - ∞		
Field of View	5°		
<b>On-Board Battery</b>			
Type	Rechargeable Li-ion Battery		
Voltage	DC 7.4V		
Continuous Operation Time	One battery up to 10 hrs, two batteries up to 20 hrs.		
<b>Others</b>			
Temperature	-20℃ ~ +50℃		
Dimension and Weight	200x190x350mm, 6.0kg		

## STANDARD CONFIGURATION



- |                               |    |
|-------------------------------|----|
| 1. Total Station              | 1x |
| 2. Rechargeable Battery       | 2x |
| 3. Battery Charger            | 1x |
| 4. Communication Cable        | 1x |
| 5. Mini USB Cable             | 1x |
| 6. SD Card                    | 1x |
| 7. Tools Kit                  | 1x |
| 8. Dryer                      | 1x |
| 9. Plummet                    | 1x |
| 10. Carrying Case             | 1x |
| 11. Operation Manual (E-copy) | 1x |
| 12. Rain Cover                | 1x |
| 13. Belt for Case             | 2x |

### Battery and Charger



LB-01 LC-10  
EU/ US type chargers choosable

## OPTIONAL ACCESSORIES



Solar Filter KF-20 Diagonal Eyepiece KDE20



**KOLIDA**  
Professional's Choice

*Smaller Size  
Increased Performance*



**KTS-472R10LC/R20LC**

**WinCE TOTAL STATION**

**KOLIDA**  
Professional's Choice

**GUANGDONG KOLIDA INSTRUMENT CO., LTD.**

Add: 7/F, South Geo-information Industrial Park, No.39 Si Cheng Road, Tian He IBD, Guangzhou 510663, China  
Tel: +86-20-22139033 Fax: +86-20-22139032  
Email: export@kolidainstrument.com market@kolidainstrument.com http://www.kolidainstrument.com

# KTS-472R10LC WinCE Total Stations

## KOLIDA's new 472 Series Total stations New Advanced Design with Improved Technology

KTS-472R10LC is designed to deliver the latest technology to surveyors worldwide, you will appreciate the technical improvement and advantages from the beginning of working with this equipment.

Featuring an ultra-powerful EDM, the KTS-472R10LC is able to measure up to 1000m without reflector at an incredible 3mm+2ppm accuracy, and in prism mode it is able to measure up to 5,000m with single prism.

Measurements are captured faster than ever: 0.1 second in tracking mode and 0.3 second in fine mode. The bright red laser dot pinpoints are also featured.

## New Touch Screen and New Program

The 3.5 inch touch screen makes operation much easier. Its 640\* 480 high resolution with true color highlighted quality highly improves the visibility under sunshine, and backlight function also provides more continence for night operation.

KOLIDA developed Mapping Genius and Engineering Genius as free mapping software for KTS-472R10LC. Its Windows CE 6.0 operation system also supports Carlson SurvCE, MicroSurvey Field Genius and other third party software to provide a complete field-to-office solution for various demands of survey works.



### Ultra-Powerful, Advanced EDM

- 1000m Non-prism range
- 5000m prism range
- 0.1-0.3 second measurement time
- Coaxial red laser pointer
- Improved performance under foggy condition



### Various Communication Interface

- USB port
- Up to 32GB SD card storage
- RS-232 serial port
- Environmentally protected



### Windows CE 6.0 operation system

- KOLIDA Mapping Genius
- KOLIDA Engineering Genius
- Carlson SurvCE (optional)
- MicroSurvey Field Genius (optional)



### Rugged, Waterproof Design

- Waterproof/ dust proof IP55 protection
- Atmosphere/ Temperature sensor
- Stable angle accuracy
- Alphanumeric keyboard with backlight

## New Functionalities

### Bluetooth

Bluetooth communication is available for KTS-472R10LC. By the Bluetooth wireless link, you can easily connect your data collector with total station without cable. This technology brings total flexibility to you field operation.



### WIFI

KTS-472R10LC is equipped with WIFI module, and support WIFI function. You can easily surf the Internet and communicate with other mobile phones or computers with WIFI. (wifi function is no more included in default configuration since April 30th 2022)

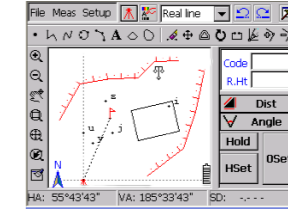


1000m Reflectless	Ultra Low-noise Amplifier	Carrier Frequency	Noise Phase Analysis	HD Display	Co-axial Laser Beam	Ultra Fast Measurement	Dual Compensation	T/P Sensor
4-probe Encoding	IP55	Windows CE 6.0	Laser Plummet	Laser Pointing	Wireless Transfer	Bluetooth Link	SD Storage	USB Interface

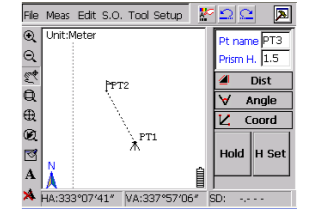
## Abundant Software

### Mapping Genius

Mapping Genius is an integrated software for field data collection and mapping. With the advantages of laptop, data collector, PDA, it realizes the integration of indoor and outdoor works.



Mapping Genius



Engineering Genius

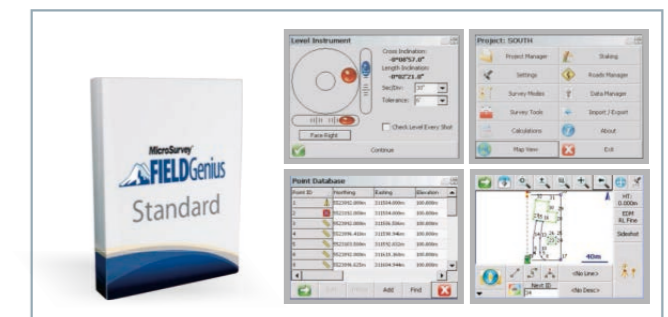
### Engineering Genius

Engineering Genius is especially designed for construction measurement works. It brings user data collection/ calculation and mapping programs which can be applied in various works.

### Carlson SurvCE (Optional)



### MicroSurvey FieldGenius (Optional)



## Comparison of KTS Series Total Stations

	442LLC	442R6LC	442UT	472R10LC/R20LC
<b>Laser Type</b>	Infrared Laser	Visible Laser		
<b>Range</b>	5,000m by 1 prism	600m non-prism 5000m by 1 prism	1000m/ 2000m non-prism 5000m by 1 prism	
<b>Laser Pointer</b>	N/A	Yes		
<b>Operation System</b>	DOS			Windows CE 6.0
<b>Built-in Memory</b>	2MB (24000 points)		12MB (100,000 points)	128MB DDR 512MB NandFlash (>2,000,000 points)
<b>SD Card</b>	Up to 32GB			
<b>Atmosphere/ Temperature Correction</b>	Manual		Automatic	
<b>Bluetooth</b>	N/A		Yes	Yes
<b>Battery</b>	2700mAH		3100mAH	